

## Abirami Pump Models

PUMP MODEL	SUCTION & DISCHARGE SIZE	PUMP MODEL	SUCTION & DISCHARGE SIZE
APM 25/16	40 X 25	APM 50/26	80 X 50
APM 25/18	40 X 25	APM 50/32	80 X 50
APM 25/20	40 X 25	APM 80/23	100 X 80
APM 25/23	50 X 25	APM 80/26	100 X 80
APM 25/20	50 X 25	APM 80/32	100 X 80
APM 40/16	80 X 40	APM 80/36	100 X 80
APM 40/18	80 X 40	APM 80/40	100 X 80
APM 40/20	80 X 40	APM 100/26	150 X 100
APM 40/23	80 X 40	APM 100/32	150 X 100
APM 40/26	80 X 40	APM 100/36	150 X 100
APM 40/32	80 X 40	APM 100/40	150 X 100
APM 50/16	80 X 50	APM 150/32	200 X 150
APM 50/18	80 X 50	APM 150/36	200 X 150
APM 50/20	80 X 50	APM 150/40	200 X 150
APM 50/23	80 X 50	APM 200/36	250 X 200
		APM 200/40	250 X 200

## ABIRAMI ENGINEERING COMPANY

### REGD. OFFICE

25, Vivekanantha Nagar, Street No.1,  
P.N. Pudur, Coimbatore - 641 041, Tamil Nadu, INDIA.  
Tel : +91 422 - 2443813  
Telefax : +91 422 - 2443813  
Cell : +91 936 3145603, +91 936 2345603,  
+91 936 3100583, +91 936 3245603  
email : abiramipumps@yahoo.com, abiramipumps@gmail.com  
website : www.abiramipumps.com

### BRANCH OFFICES

**TAMILNADU & KERALA : RKG MARKETING :**  
199, Sambantham Road (E), R.S. Puram,  
Coimbatore - 641 002.  
Phone No. +91 422 4369922, 2554420  
email : rkgmarketing@yahoo.in

### FACTORY UNIT 1

**"ABIRAMI GARDEN"** S.F.No. 348/1-A2,  
Kalappanaicken Palayam, Agarwal School Road,  
Somayampalayam Panchayat, Coimbatore - 641 108,  
Tamil Nadu, INDIA.  
Tel : +91 422 - 2404270, 2404720, 2975603  
Telefax : +91 422 - 2404270  
email : marketing@abiramipumps.com

### FACTORY UNIT 2

Unit - II, S.F. No. 408/2, Plot No: 2/D,  
The Cheran Co-operative Industrial Estate,  
Somayampalayam Village,  
Coimbatore - 641108.  
Ph:7339111077

### MARKETING AGENTS AT :

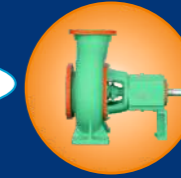
New Delhi Dhaka  
Mumbai Vietnam  
Hyderabad Lebanon  
Ahmedabad Egypt  
Chennai  
Udumalpet



*Pumps at its Best*

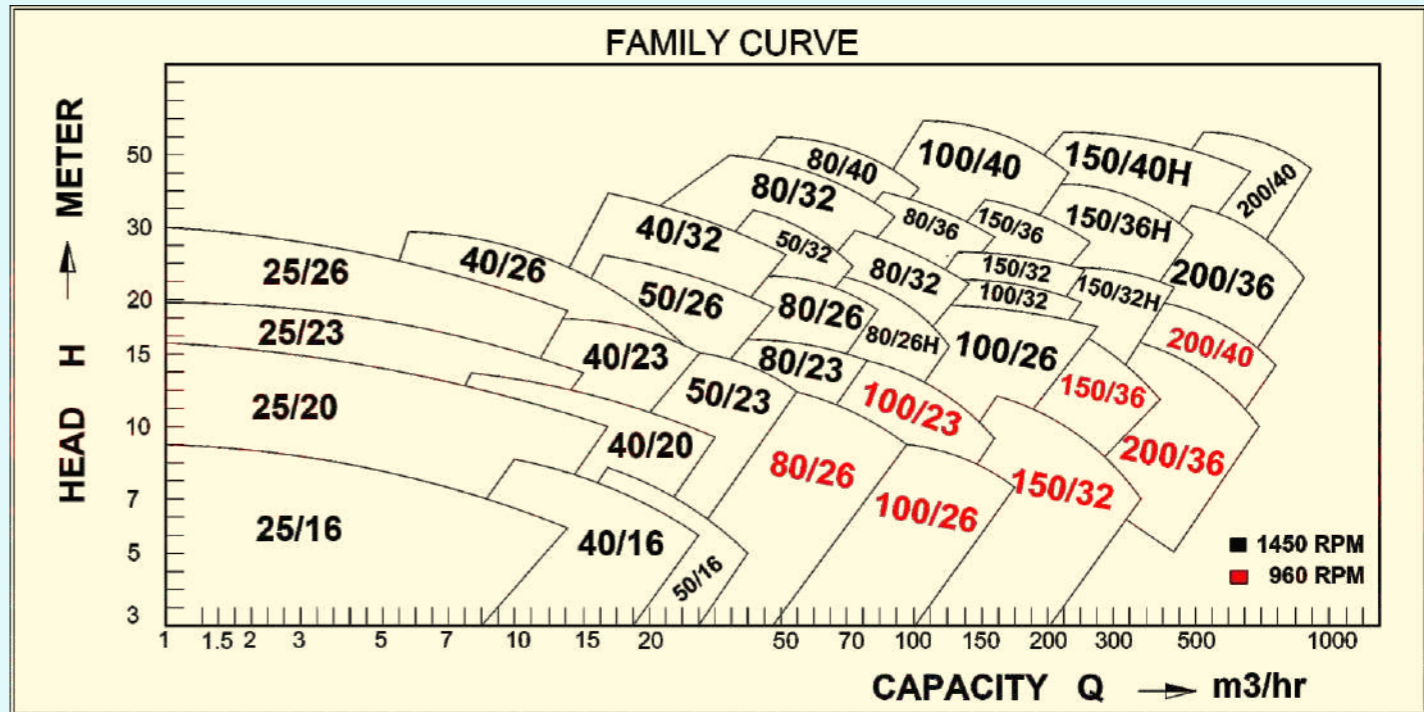
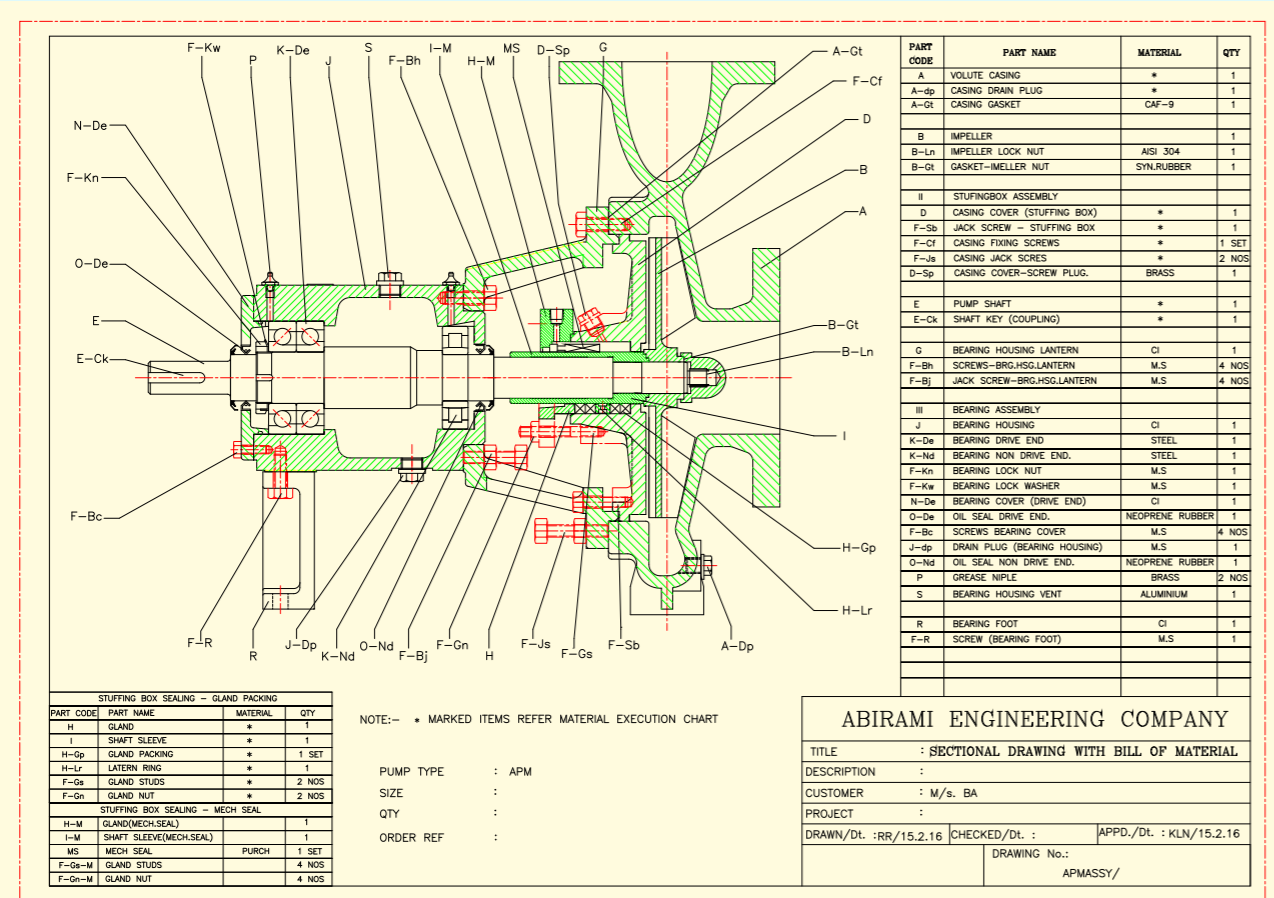
**ABIRAMI PUMPS**

Complete Solution for All Liquid Handling



## Abirami Pump APM





**ABIRAMI APM PUMP - Applications :**  
Acid Transfer, Caustic Application, Polymer, Vegetable Oils, Solvents, Distillery Bio Fuels, Sugars, Starch, Petrochemicals, Pharma, Paints, Petrochemical Etc

**Design Standard - ANSI Design:**  
Centrifugal, Radial Split, Back Pull Out Type With Heavy Duty Triple Bearing Design. Triple Locking Arrangement for Impeller. Which Gives Trouble free Operation.

**Bearings:**  
Drive End 2 Nos. Deep Groove Ball Bearing To Handle Axial Thrust, Non Drive End 1 No. Deep Groove Ball Bearing to Mangle Radial Thrust, Play Less Than 0.03mm For Maximum Seal Life.

**Heavy Duty Shaft:**  
As Per ISO 5199 Standard. Maximum Shaft Deflection Less Than 0.05mm At Face Of Stuffing Box. Ensures Long Seal Life, And Bearing Life. Very Low Maintenance Is Ensured.

**Bearing Protection :**  
Oil Seal Protects Bearing Oil Contamination Due To Any Leakage In Stuffing Box.

**Renewable Shaft Sleeve:**  
Hardened Shaft Sleeve Which Ensures The Best Life

**Heavy Duty Casing:**  
Pumps Are Designed To Withstand Up To 16 Bar Pressure Rating. Discharge Size From 25mm To 200mm.

**Impellers:**  
Open Impeller With Back Vane Arrangements For The Best Performance, Efficiency And Low NPSH Requirement

**Operating Range:**  
Capacity Maximum : 700 Cum/hr  
Head : Up To 50 Meters  
Operating temperature : up to 120 Deg. C

**Types of Impeller :**



**SPECIALITIES OF ABIRAMI PUMPS**

- ❖ New aged energy efficient pumps for the efficient & productive operation.
- ❖ Complete range of centrifugal pumps to cover all applications in the industry.
- ❖ Heavy duty triple bearing design for trouble free operation
- ❖ Impeller triple locking system ensures no damage for impeller due to back pressure
- ❖ High mechanical reliability
- ❖ Improved metallurgy.
- ❖ Environment friendly
- ❖ Maintenance free & noise free.
- ❖ Aesthetic appearance.
- ❖ Low maintenance with best inter changeability
- ❖ Economic pricing with shortest delivery period.
- ❖ Energy audit undertaken for pumps.
- ❖ Prompt service back up.
- ❖ Continuous improvement without affecting fixing dimensions for an efficient operation.