



WATER WORKS - Corporation Connections
Get the Lead Out

Trust in the No-Lead Experts

It is the job of the water works industry to manage the transfer of this resource while ensuring that the quality of water is clean and safe. As we all work to convert the current lead-based lines to no-lead, you're going to want a water works manufacturer that you can trust, such as A.Y. McDonald. In preparation for this very situation, consider our no-lead adapter options when upgrading from the corporation stop to the meter. Utilizing these parts in the switch to no-lead will make your job easier while also keeping your city's drinking water at top quality!

Contact your Territory Manager today to purchase these parts separately or as a kit.



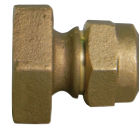
74741Q
Female Special Purpose x Q CTS



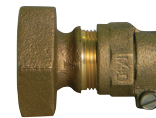
74741F
Female Special Purpose x FNPT



74742LFF
Female XS Lead Flange x FNPT



74742LFQ
Female XS Lead Flange x CTS Compression



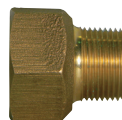
74742LF-22
Female XS Lead Flange x CTS Compression



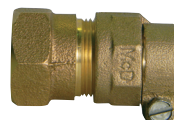
74777S
Female Special Purpose Swivel 1/4" Bend x Flare



74749SQ
Female Special Purpose Swivel 1/8" Bend x CTS



74742P
Female Special Purpose x MNPT



74742-22
Female Special Purpose x CTS Compression



74742CAP
Female Special Purpose Cap

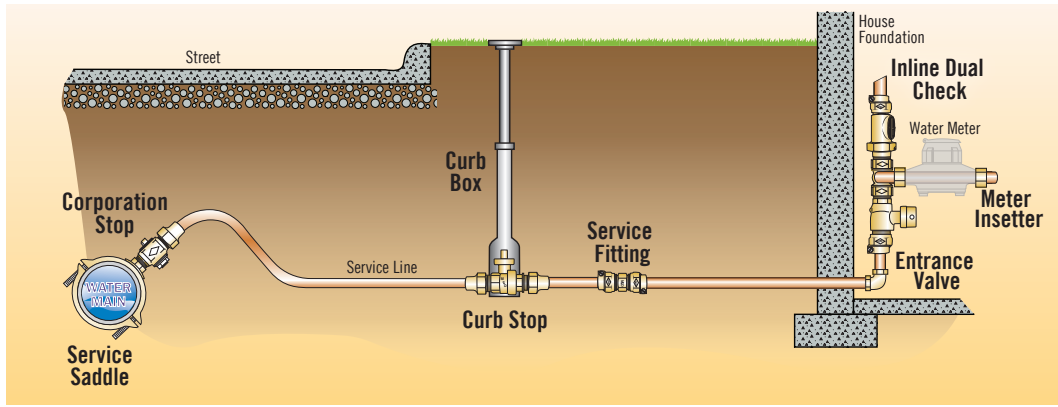


74742LFCAP
Female XS Lead Flange Cap

Other outlet connections, such as Flare, G nut, T nut, etc. may be available. Contact Factory.

Get the Lead Out

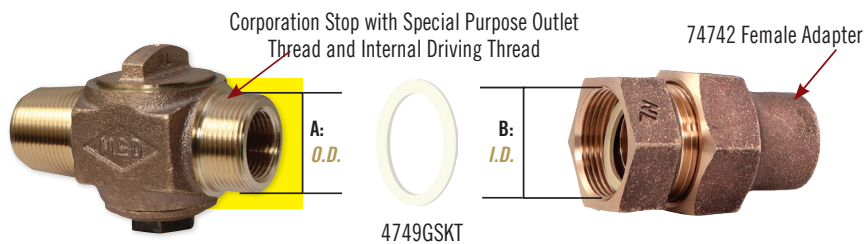
Standard Water Service Lateral



Corporation Stop with Special Purpose Outlet Thread and Internal Driving Thread

"A" - Valve Male Thread O.D.

Valve Size	O.D. Thread Size - Approx.
5/8"	1 1/16"
3/4"	1 1/4"
1"	1 1/2"



"B" - Female Thread Adapter I.D.

Union Nut Size	I.D. Thread Size - Approx.
5/8"	1"
3/4"	1 3/16"
1"	1 7/16"

Reusing Existing Corporation

Corporation Stop with Special Purpose Outlet Thread and Internal Driving Thread

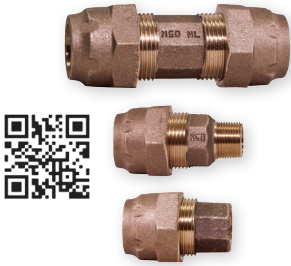
THEN	NOW
<p>Lead Wipe Joint off 45° bend and Special Purpose Thread Corporation Stop</p>	<p>74749 45° Female Special Purpose Thread (Integral or Swivel) x CTS Compression or Flare</p> <p>COPPER CTS - Copper Tube Type K or L</p> <p>BLACK - POLY CTS - Polyethylene ASTM D2737 SDR 9 Tube Size</p>
<p>Lead Wipe Joint off Straight Connection and Special Purpose Thread Corporation Stop</p>	<p>74742 Straight Connection Special Purpose Thread x CTS Compression or Flare</p> <p>BLUE - POLY CTS - Pex Tubing ASTM F876 SDR 9 CSA B137.5</p> <p>BLACK - POLY CTS - Polybutylene ASTM D2666 SDR 9 Tube Size Class 250</p>
<p>Lead Wipe Joint off 90° bend and Special Purpose Thread Corporation Stop</p>	<p>74777 90° Female Special Purpose Thread (Integral or Swivel) x CTS Compression, PEP Compression, or Flare</p> <p>COPPER CTS - Copper Tube Type K or L</p> <p>BLACK - POLY CTS - Polyethylene ASTM D2737 SDR 9 Tube Size</p> <p>BLUE - POLY CTS - Pex Tubing ASTM F876 SDR 9 CSA B137.5</p> <p>BLACK - POLY CTS - Polybutylene ASTM D2666 SDR 9 Tube Size Class 250</p> <p>EIGHT BLUE - POLY PEP - Polybutylene ASTM D2662 SDR7</p> <p>BLACK - POLY PEP - Polyethylene ASTM D2239 SDR7 / SDR9 Polyethylene Pipe Size</p>

Although there are many potential configurations of old and outdated service line connections, here are a few of the common ones you may run into. For assistance contact our customer service department at 1.800.292.2737.

Get the Lead Out

RANGER Fitting Sizing Chart

The RANGER has you covered on Lead Mechanical Connections

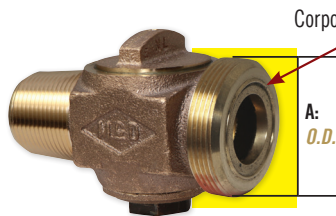


Ranger Size	Ranger Bottom Range	Strong Lead	Extra Strong Lead	Double Extra Strong Lead	Ranger Top Range
3/4"	0.872"	(5/8") 1.004"/1.034"	(1/2") .861"/.891" (5/8") 1.067"/1.097"	(1/2") .997"/1.027"	1.089"
1"	1.121"	(3/4") 1.141"/1.171"	(3/4") 1.197"/1.227"	(3/4") 1.321"/1.351"	1.384"
1 1/4"	1.371"	(1") 1.413"/1.443"	(1") 1.477"/1.507"	(1") 1.581"/1.611"	1.804"
1 1/2"	1.621"	(1 1/4") 1.655"/1.685"	(1 1/4") 1.75"/1.78"	(1 1/4") 1.874"/1.904"	2.109"
2"	2.12"	(1 1/2") 1.969"/1.999"	(1 1/2") 2.061"/2.091"	(1 1/2") 2.257"/2.287"	2.709"

Corporation Stop with Extra Strong Lead Flange Outlet

"A" - Valve Male Thread O.D.

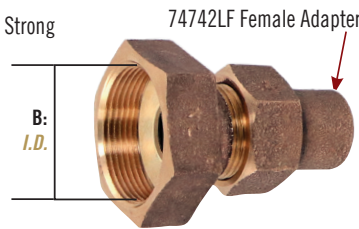
Valve Size	O.D. Thread Size - Approx.
1/2"	1 1/2"
5/8"	1 5/8"
3/4"	1 7/8"
1"	2 1/4"



Corporation Stop with Extra Strong Lead Flange Outlet



4742LFGSKT



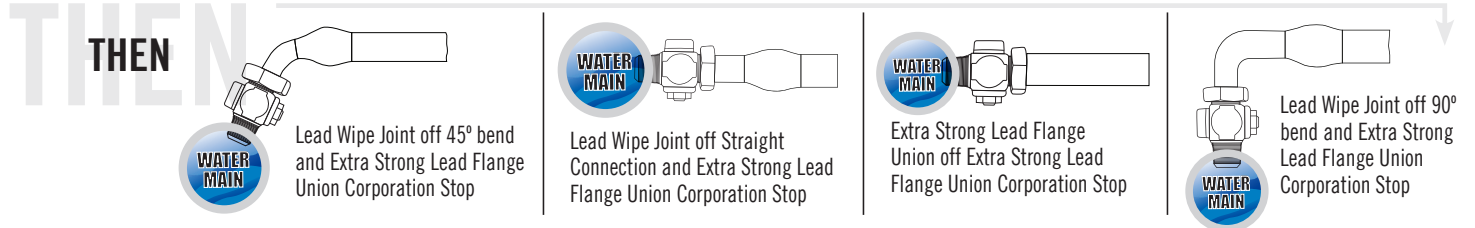
74742LF Female Adapter

"B" - Female Thread Adapter I.D.

Union Nut Size	I.D. Thread Size - Approx.
1/2"	1 3/8"
5/8"	1 9/16"
3/4"	1 3/4"
1"	2 1/16"

Reusing Existing Corporation

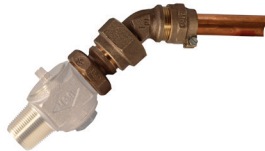
Corporation Stop with Extra Strong Lead Flange Outlet



NOW

74742LFL & 74750S

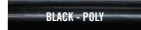
Extra Strong Lead Flange x Flare (Less Flare Nut) x 45° Female Flare (Integral or Swivel) x CTS Compression, Flare, PEP, PVC, & IPS



CTS - Copper Tube Type K or L



CTS - Pex Tubing ASTM F876 SDR 9 CSA B137.5



CTS - Polyethylene ASTM D2737 SDR 9 Tube Size



CTS - Polybutylene ASTM D2666 SDR 9 Tube Size Class 250



PEP - Polybutylene ASTM D2662 SIDR7



PEP - Polyethylene ASTM D2239 SIDR7 / SIDR9 Polyethylene Pipe Size



PVC - Brass Pipe and PVC ASTM D1785 SCH 40.



IPS - Polyethylene ASTM D3035 SDR 9 / SDR 11 OD Controlled Iron Pipe Size



IP - Steel Pipe

74742LFL & 74776S

Extra Strong Lead Flange x Flare (Less Flare Nut) x 90° Female Flare (Integral or Swivel) x CTS Compression, Flare, PEP, PVC, & IPS



74742LF

Extra Strong Lead Flange x CTS Compression or Flare



CTS - Copper Tube Type K or L



CTS - Pex Tubing ASTM F876 SDR 9 CSA B137.5



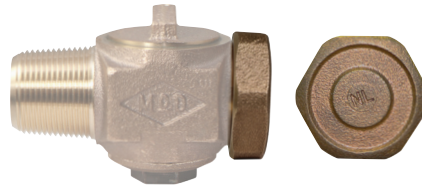
CTS - Polyethylene ASTM D2737 SDR 9 Tube Size



CTS - Polybutylene ASTM D2666 SDR 9 Tube Size Class 250

Restrict

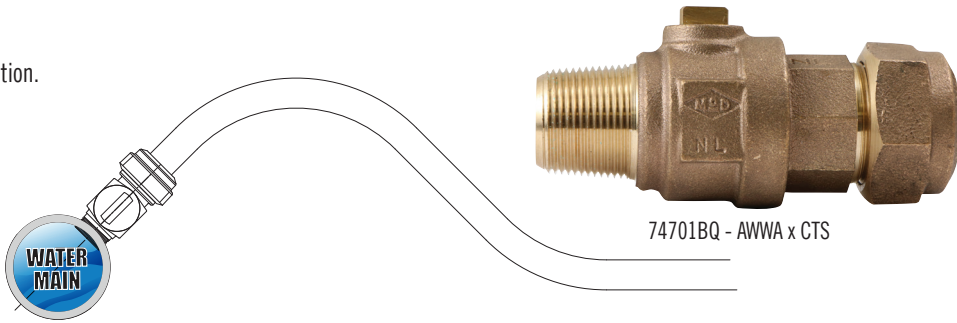
By closing corporation valve and adding end cap.



74742CAP & 74742LFCAP

Replace

Replace corporation with new corporation.

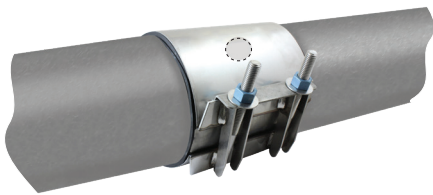


74701BQ - AWWA x CTS

Remove

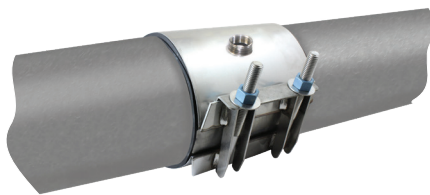
Remove corporation and apply repair clamp or clamp with tap.

425/825/1625 Repair Clamp



Repair clamp covers hole in pipe where lead corporation stop was located.

435/835/1635 Repair Clamp with Tap



Repair clamp with tap aligned with hole in pipe for install of new corporation stop.

78423 Integral Corp Saddle



Saddle with built-in corporation stop for easier installation

Abandon Sleeve



Coming Soon

See stainless steel saddles & repair clamp brochures.



WITHOUT YOU THERE IS NO US.

4800 Chavenelle Road | Dubuque, IA 52002

1-800-AY-CARES | aymcdonald.com | aymcdonald.com
 (292-2737)

Follow us on social media

