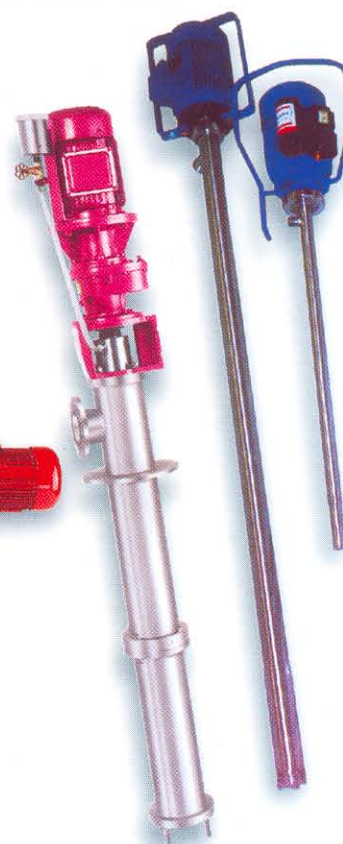
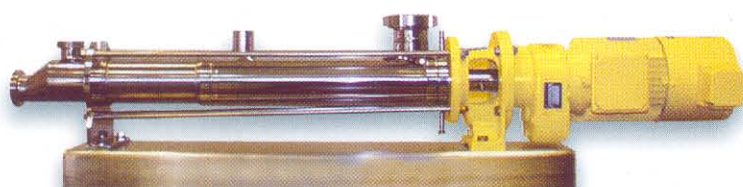
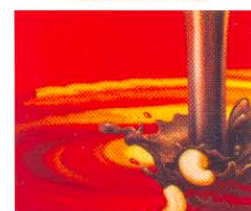
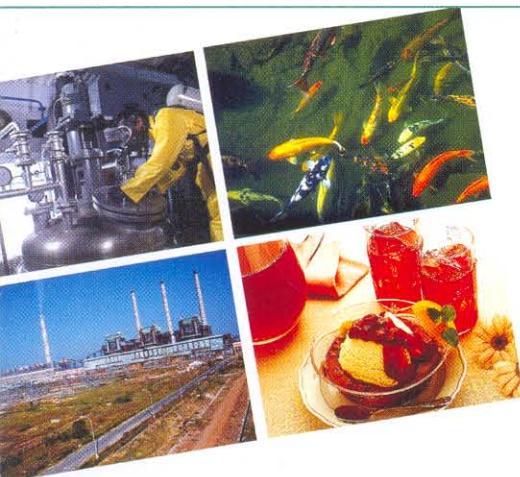




# HYDRO PROKAV

*Presents*

**VERSATILE MODULAR DESIGN  
PROGRESSIVE CAVITY PUMPS**



*where... handling is an art*







## KX SERIES

Capacity - upto  $200\text{M}^3/\text{hr}$ , Pressure - upto 48 Bar  
Temperature- $200^\circ\text{C}$ , Viscosity-10,00,000CST

Brewery and Distillery, Ceramics and Refractories, Chemical and Process, Construction, Cosmetics and Toiletries, Edible Oil, Effluent and Sewage Treatment, Electronics, Engineering, Fertilizer, Marine, Mining Man-made Fibre, Oil Exploration, Paint and Varnish, Paper, Pulp and Cellulose, Petrochemical and Refinery, Printing Ink, Soap and Detergent, Sugar etc.

### Field of application :

Acidic and Alkaline Slurry, Alum, Bentonite Slurry, Black liquor, Casein Slurry, Ceramic Slurry, Clay Slurry, Coating Mix, Detergent Slurry, Electroplating solution, Emulsions, Ferrite Slurry, Fuel oil sludge, Glue, Grout mix, Lube oil, Molasses, Paint, Paper Pulp, Printing Ink, Resins, Sewage sludge, Soap stock, Sodium Silicate, Sulphited Sugar juice, Varnish, Vegetable oil, Gum sludge, Viscose, Yeast, Petroleum Jelly etc.

### Features

- Torsion free metal-bonded stator for increased stator life, higher efficiency and per stage pressure.
- Double-seated universal joints for smoother power transmission and longer service life of critical components.
- Works on the unique Progressive Cavity Principle. Inherently non-clogging and capable of handing a high percentage of solids.
- Positive displacement, inherently self-priming and capable of handing entrapped gases.
- Low internal velocity of fluid within the pump ensures low shear and minimises wear due to erosion.
- Low NPSH requirement results in a higher suction lift upto 8.4 meters of water column.
- Continuous pulsation-free flow with minimum turbulence. Flow rate proportional to the pump speed.
- Capable of developing high pressure upto 48 Bar-even at a low pump speed.
- Handles any liquid from water to abrasive slurry and froth to highly viscous media.

## KXCC SERIES

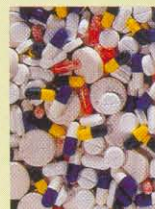
Capacity- upto  $75\text{M}^3/\text{hr}$ , Pressure-upto 12 Bar,  
Temperature- $120^\circ\text{C}$ , Viscosity-10,00,000 CST

### Field of application :

Acidic and Alkaline Slurry, Alum, Bentonite slurry, Casein Slurry, Ceramic slurry, Coating Mix, Detergent slurry, Dewatered sludge, Electroplating solution, Emulsions, Ferrite slurry, Flocculent, Glue, Grout Mix, Gum Sludge, Industrial wastes, Latex, Lube Oil, Magma, Massecuite, Molasses, Oil Sludge, Paint Paper pulp, Petroleum jelly, Polyelectrolytes, Printing ink, Resins, Soap stock, Sodium Silicate, Spent wash, Varnish, Vegetable oil, Viscose, Water to Thickened Sludge, Yeast etc.,

### Features:

Compact Configuration of Screw Pumps in which the Pumping Parts are coupled directly to the drive thereby eliminating the Bearing Housing. Suitable for restricted spaces of operation or Mobile Pump Sets apart from low maintenance and cost effectiveness ensuring long service life. Various Material of Construction are offered to suit varied applications in CI, CS, SS304, SS316 etc., while Stators will be of Natural, Nitrile, EPDM, Neoprene, Hypalon, Viton, Silicon, Butyl, Hi-Nitrile, Buna Poly Butadiene etc.,





## KXF - SERIES

Capacity- upto  $150\text{M}^3/\text{hr}$ , Pressure- upto 48 Bar,  
Temperature- $200^\circ\text{C}$ , Viscosity-10,00,000 CST

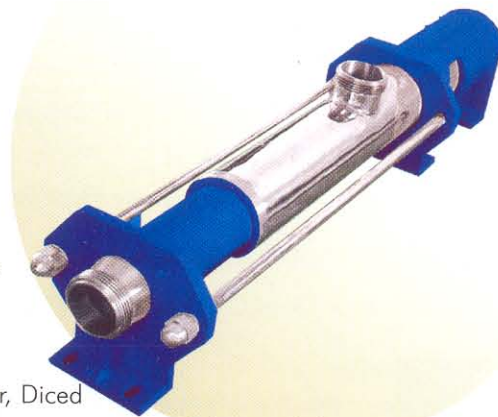
Beverages, Brewery, Confectionery, Cosmetics and Toiletries, Dairy, Distillery,  
Edible oil, Food Processing, Fruit processing, Ice-cream, Pharmaceuticals,  
Winery etc.

### Field of application :

Amla pulp, Beer, Beverages, Butter oil, Cream, Curd, Demineralised water, Diced  
vegetables, Edible gelatine, Fruit juice, Fruit Pulp and Cubes, Glucose, Ice-cream mix,  
Jams, Latex, Liquor, Lotions and creams, Malt extract, Medical formulations, Milk, squashes, Sugar  
syrup, Tamarind extract, Tooth paste, Tomato paste, Vegetable refined oil, Wine, Yeast etc.

### Features

- All metallic parts in contact with the fluid are in smooth finish Stainless Steel.
- Stator is of non-contaminating polymer which is resistant to oil and fats.
- All internal contours are designed to be swept by the product flow or by a detergent when 'in-line' cleaning.
- Elimination of product retaining pockets avoids chemical or bacterial contamination.
- Simple construction allows quick dismantling.
- Can work against high vacuum. Ideal for lifting viscous fluids from the vacuum pan.
- Low fluid velocities ensures gentle handling of shear sensitive fluids without damage.
- Pulsation, turbulence or aeration-free metered flow proportional to speed.
- Capacity varied by simple variation of pump speed to match system parameters.



## KXW - SERIES

Capacity - upto  $170\text{M}^3/\text{hr}$ , Pressure- upto 48 Bar  
Temperature- $200^\circ\text{C}$ , Viscosity-1,00,00,000 CST

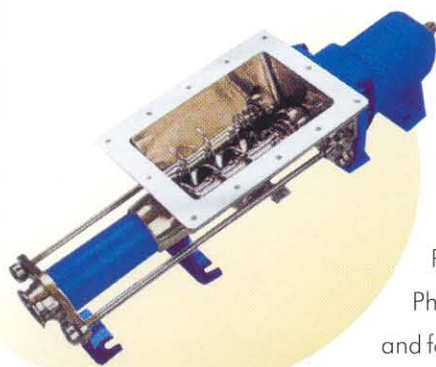
Bakery, Confectionery, Construction, Chemical, Dairy, Edible oil, Explosives,  
Fruit-Processing, Malt and Cocoa, Mining, Meat Processing, Paper and Pulp,  
Paint and Varnish, Petrochemicals and Refineries, Printing Inks,  
Pharmaceutical, Pickles, Sewage, Sugar, Soap and Detergents, Starch, Winery  
and for materials usually regarded as un-pumpable, Non Newtonian.

### Field of application :

Aluminium / Magnesium Hydroxide Paste, Butter, Cake-mix, Chocolate mix, Clay Slurry, Explosive Slurry, Formic acid  
Slurry, Fruit or Vegetable mash, Ghee, Grease, Green asbestos Slurry, Grout mix, High Consistency Paper Pulp,  
Lecithin, Lithophone paste, Malt mix, Minced Meat, Mashed Grapes, Oil Paste, Paint Pre-mix, Pickle mix, Pigmented  
Varnish, Putty, Starch Slurry, Thick Coal Slurry, Undiluted Sludge Yoghurt etc.

### Features

- Open hopper type inlet with auger fitted at the bottom to ensure pumping of difficult-to-flow-media into the pumping element.
- Torsion-free metal-bonded stator for increased stator life, particularly for highly viscous and fibrous material.
- High pressure building capability allows the transfer of viscous/pasty/fibrous matter to longer distances and higher heads.
- Low internal velocity of the fluid minimises wear and tear due to erosion.
- Easy and quick maintenance, which does not require any special tools.
- Pulsation, turbulence or aeration free metered flow proportional to the speed.
- Specially suited for non-Newtonian media, slurries and fibrous matter with low moisture content without changing the product mix or dewatering.





## KB SERIES

Capacity - upto  $10\text{M}^3/\text{hr}$ , Pressure - upto 12 Bar, Temperature- $120^\circ\text{C}$

Viscosity-1,00,000CST

Chemical and Process, Brewery, Electrical, Engineering, Mining, Oil, Paint and Varnish, Ink, Pharmaceutical, Power etc.

### Field of application :

Acids, Beer, Diesel Oil, Lubricating Oil, Furnace Oil, Drug Formulations, Varnish Chemical Solutions etc.

### Features

Works on the unique Progressive Cavity principle.

Simple in design and easy to use.

Positive displacement and capable of handling entrapped gases.

Low internal velocity of fluid within the pump ensures gentle handling of liquid minimising shear and erosion.

Torsion-free metal-bonded stator for increased stator life and higher efficiency.

Adaptable for any kind of drive like pneumatic or hydraulic.

