

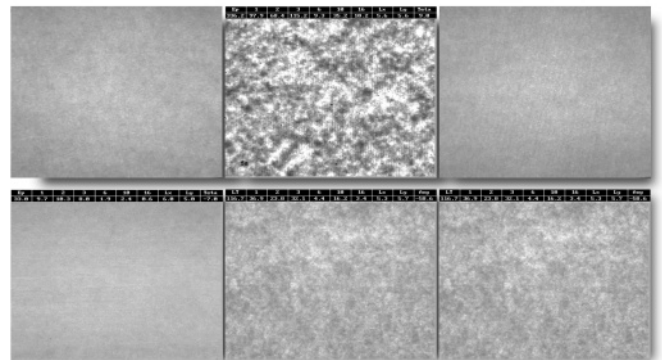


ADVANTAGES - HIGHLIGHTS

- > Turn Key installation
- > One click measurement, Results within seconds, high repeatability
- > Durable light source : no warming up, recalibration or replacement of lights
- > Basic weight range from 10-1000 g
- > Built in automatic feeder
- > Large measurement size : 12x12 cm
- > Data can be connected to DCS - same system online

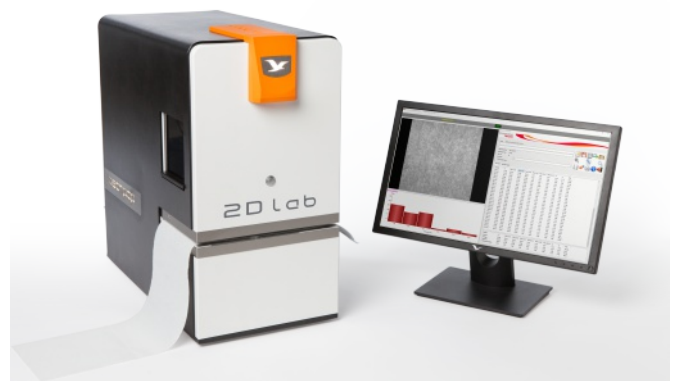
APPLICATIONS

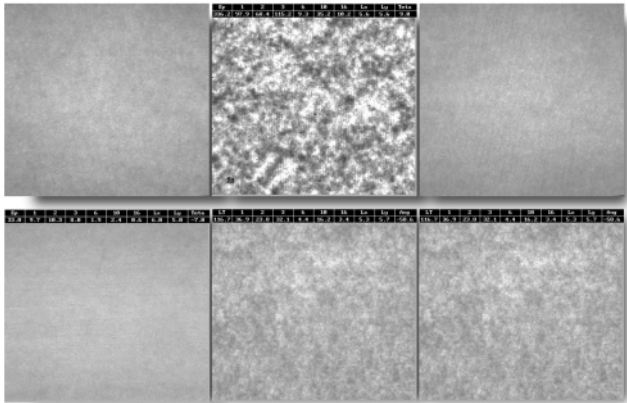
- > Tissue
- > Printing / writing
- > Board
- > Construction material
- > Pulp sheets



GENERAL FEATURES

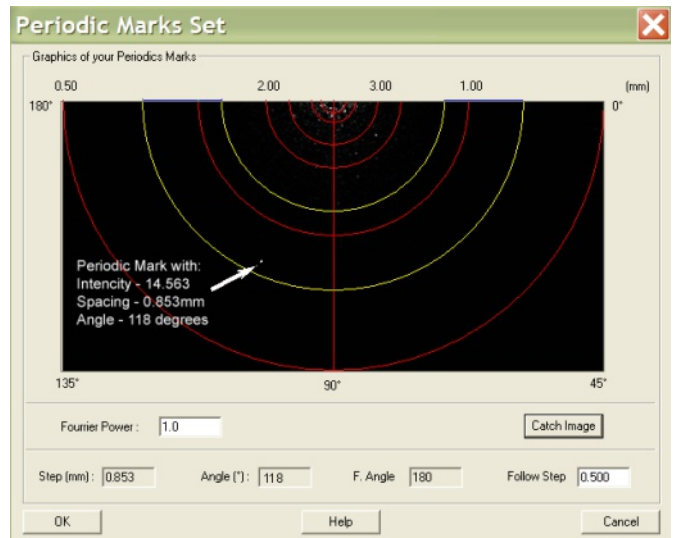
- > Look through formation similar to visual comparison
- > Automatic adjustable light source
- > FFT - Fast Fourier Transform image analysis.





DISPLAYED RESULTS

- > Look-through formation index 12x12 cm (4,75"x 4,75")
- > Floc size distribution in 6 classes (1, 2, 3, 6, 10 and 16 mm)
- > Floc anisotropy (average Lx, Ly and angle)
- > Observation on PM jet/wire ratio
- > Periodic marks (wire/felt marks) including intensity, distance, angle
- > Statistical results.



Measurement

Measured Area	120 x 120 mm / 4.75" x 4.75"
Measurement Frequency	2 images per second
Basic weight of the sheet	10 to 1000 g/m ² , depending also on opacity
Resolution	0,25 mm
Repeatability	< 1 %

Sensor

Weight	22,3 kg
Dimensions	55 x 25 x 65 (h) cm