

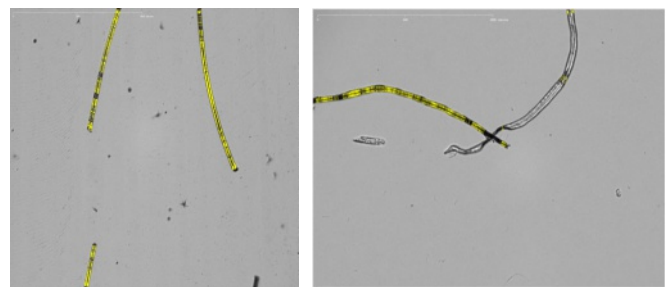


HARDWARE EXTENSION TO MORFI NEO

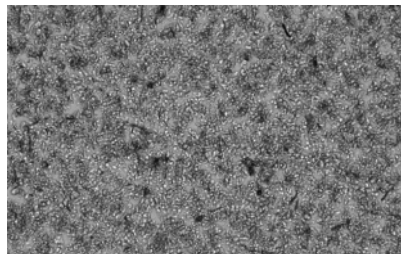
- > Mounted on backside as a separate module
- > Fully controlled by MorFi Software
- > High resolution camera:
 - Resolution down to 0,5 μm
 - Adjustable cell gap
- > MorFi HR Software can be used separately or incorporated into MorFi Neo interface

APPLICATIONS

- > Fiber wall thickness true optical measurement:
 - Typically ranging from 3 to 9 μm according to the several different wood types used worldwide for pulp production
 - Wall thickness values are integrated among the standard fiber morphology results to MorFi Neo
- > Hydroseg Index : exclusive CTP* index to determine the fractionality of fiber by Hydrocyclone.
- > MFC behaviour:
 - Determination of flocculation index for example



Wall Thickness images by MorFi HR



MFC image by MorFi HR

ANALYSIS DURATION

- > MorFi fiber cycle

MEASUREMENT PROPERTIES

- > Wall Thickness distribution (10 classes)
- > Wall Thickness Average and Standard deviation
- > Width Average and Standard deviation
- > Hydroseg Index

*CTP : Centre Technique du Papier

